



y saying /igh/
Shrunk!



Let's practise reading some of this week's focus words.



pullup n



What do you notice about these words?

time

shy

reply

prize

bright

sigh

wild

All of these words contain the /igh/ phoneme even though they are spelt in different ways.

Check



Today we are learning to read and sort words containing the /igh/ phoneme.





Kit and Sam found a tiny secret door in their garden. They wanted to see what was inside. Sam ran into the house to get the magic map. "Take us through the secret door!" said Kit. The garden began to fade around them.



Kit, Sam and Ben found themselves on the other side of the secret door. They were surrounded by tall grass and enormous insects. They had shrunk!



“We’re tiny!” said Kit. “The insects are now really big! I’m glad you’re here, Ben.”

“We’re on a minibeast adventure,” said Sam. “Look at those giant ants! They are carrying leaves with words on.”

The ants have lined up and sorted some words. What is the rule for each spelling pattern? Click on the ant to reveal it.



high
sigh



hide
wide



my
by
try



tie
pie
lie



item
wild

Used when the sound is at the end of a word or when the sound is in the middle of the word and is followed by a vowel.



Used when the sound is in the middle of a word. Most common words end in 'ie'.



At the end in some words and in the middle of some common words.



Only used in words like 'tie' and 'die'. All words ending in 'ie' are in suffixes like 'lie' and 'tie'. The sound is at the end of the word.



Often used when the sound is at the start of the word and in words of two syllables or more. An exception is 'ice'.



Why have the ants sorted them like this? What should the heading be on each leaf?

Click on the leaf to reveal the heading.



Which line should each ant join? Why?

tight

prize

cry

pie

idea

tribe

This activity could be done physically by playing the **Sound Family Word Sort PAPH Game**.



Click us for Physically Active Phonics tips!





Which line should each ant join? Why?

tight

prize

cry

pie

idea

tribe

by

This activity could be done physically by playing the **Sound Family Word Sort PAPH Game**.



Click us for Physically Active Phonics tips!





Which line should each ant join? Why?

tight

prize

cry

pie

idea

right

tribe

by

This activity could be done physically by playing the **Sound Family Word Sort PAPH Game**.



Click us for Physically Active Phonics tips!





Which line should each ant join? Why?

tight

prize

cry

pie

idea

right

tribe

by

delight

This activity could be done physically by playing the **Sound Family Word Sort PAPH Game**.



Click us for Physically Active Phonics tips!





Which line should each ant join? Why?

tight

prize

cry

pie

idea

right

tribe

by

delight

fry

This activity could be done physically by playing the **Sound Family Word Sort PAPH Game**.



Click us for Physically Active Phonics tips!





Which line should each ant join? Why?

tight

prize

cry

pie

idea

right

tribe

by

idol

delight

fry

This activity could be done physically by playing the **Sound Family Word Sort PAPH Game**.



Click us for Physically Active Phonics tips!





Which line should each ant join? Why?

tight

prize

cry

pie

idea

right

tribe

by

idol

delight

fry

pylon

This activity could be done physically by playing the **Sound Family Word Sort PAPH Game**.



Click us for Physically Active Phonics tips!





Which line should each ant join? Why?

tight

prize

cry

pie

idea

right

tribe

by

die

idol

delight

fry

pylon

This activity could be done physically by playing the **Sound Family Word Sort PAPH Game**.



Click us for Physically Active Phonics tips!





Which line should each ant join? Why?

tight

prize

cry

pie

idea

right

tribe

by

die

idol

delight

hide

fry

pylon

This activity could be done physically by playing the **Sound Family Word Sort PAPH Game**.



Click us for Physically Active Phonics tips!





The ground began to tremble like a thousand boots were marching towards them.

“It’s the line of ants!” shouted Kit. “They are heading this way! Run!”

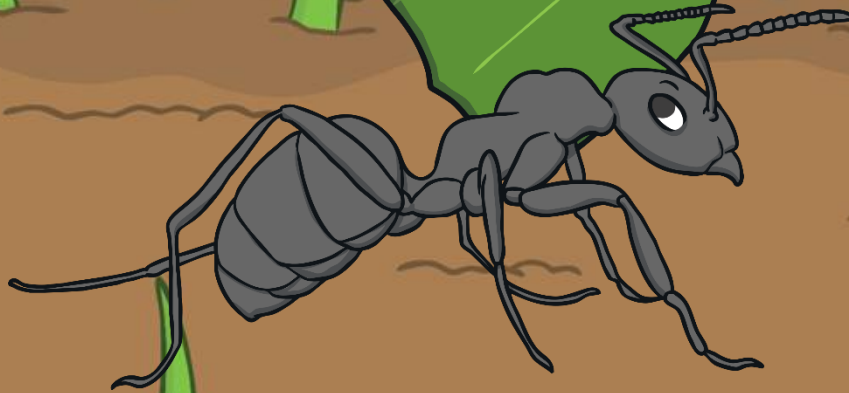
The ants surrounded Kit and Sam. “Who are you?” they asked. “Why are you here?” The ants had lots of questions for them. Read the questions on the leaves the ants are carrying.

To make this section more active, you could ask the children to read the question and then move to a corner labelled ‘yes’ ‘no’ corner to represent their answer.

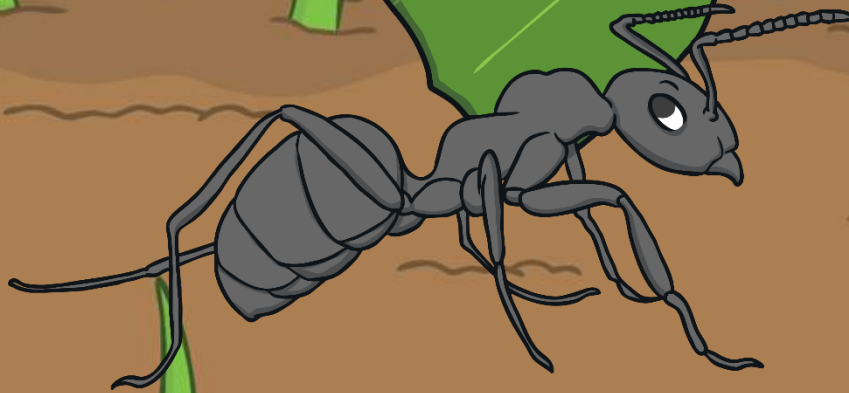


Click me for Kit's teaching tips!

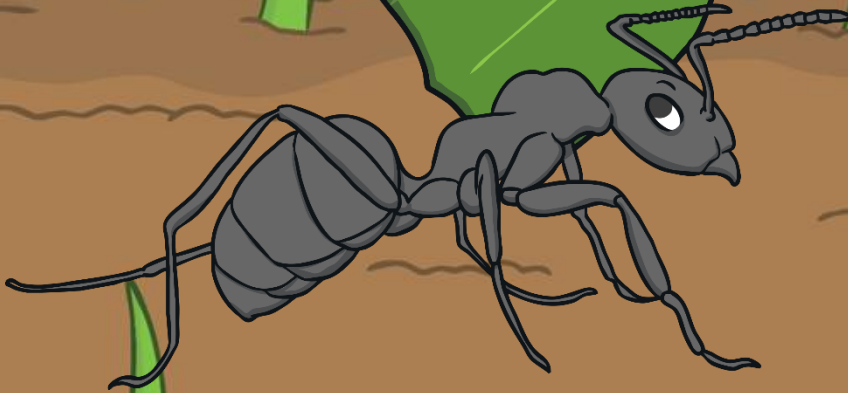
Can you
hover in
the sky?



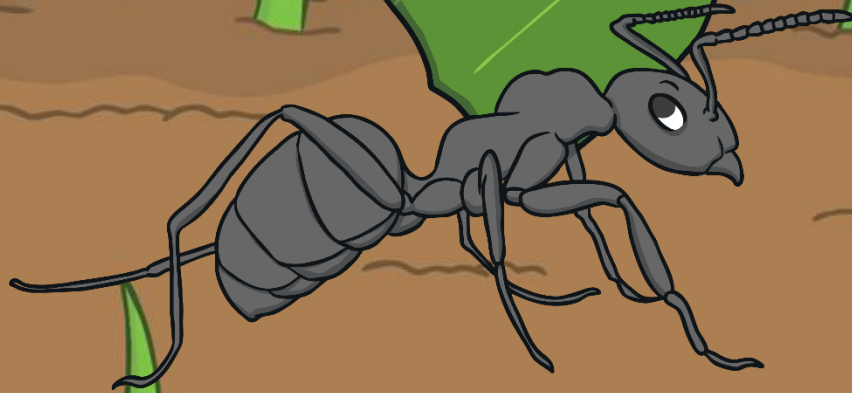
Are you
a kind
of fly?



Can you
cry?



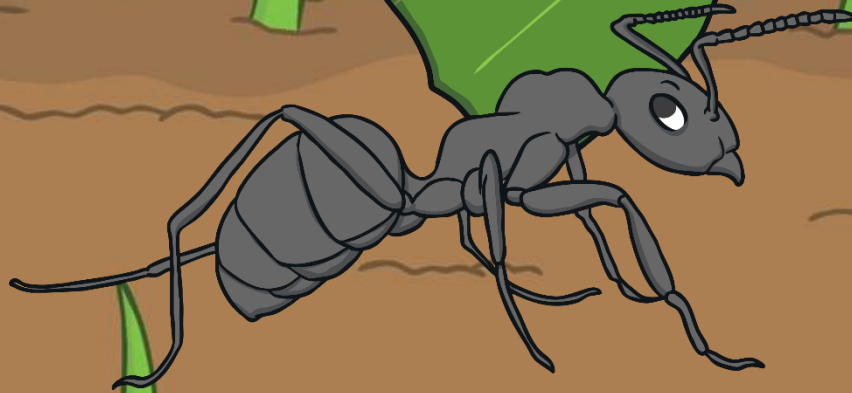
Are you
a sly spy
for the
spiders?



Did you
hatch from
eggs in
July?



Is your
skin dry?



Kit and Sam notice another sign on the door.
Help Kit and Sam to read the sign.



**So, you try the secret door
And come inside to find;**

**Grass, sky and things to spy,
Great creatures here behind.
But beware who comes by;**

**An army dressed in nightshade black,
They seem to multiply.**

Today, we have learnt...

y

saying /igh/



The adventure
continues next lesson!

